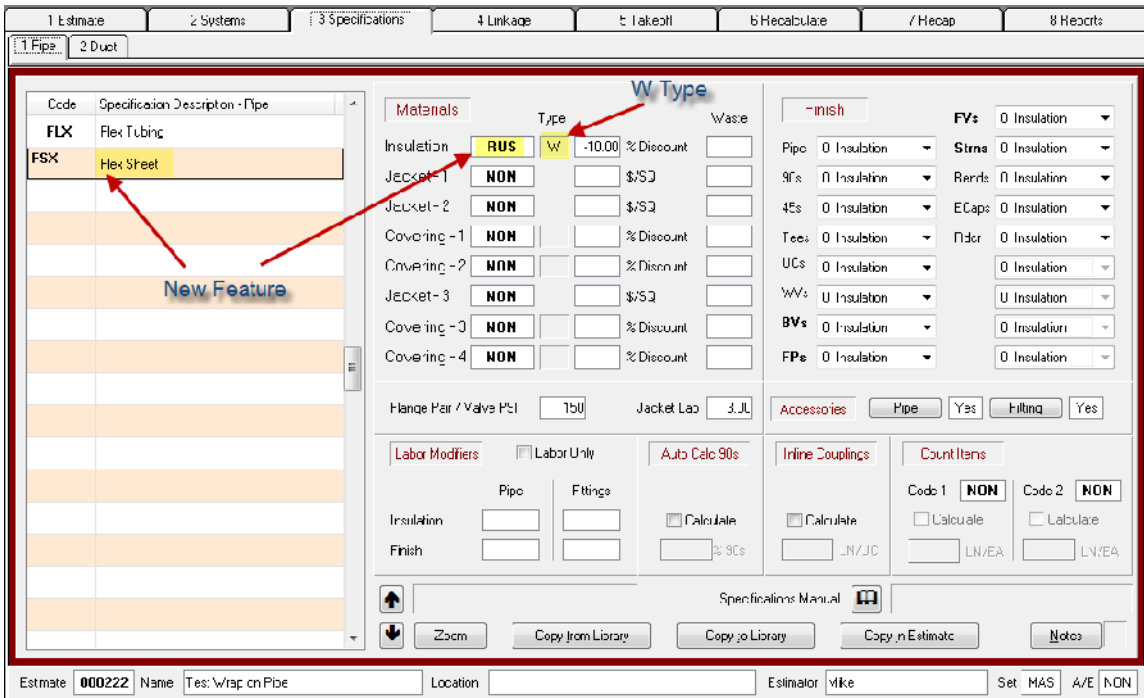


**Comput-Ability® Estimate Systems  
Mechanical Insulation's Key Estimator™ - Version XV**

**MIKE™ XV Guide to using a Wrap Type Insulation in a Pipe Spec.**

A new feature has been added to **MIKE™ XV**. This feature allows you now to estimate **Wrap Types of Insulation** directly on Pipe and Pipe Fittings.



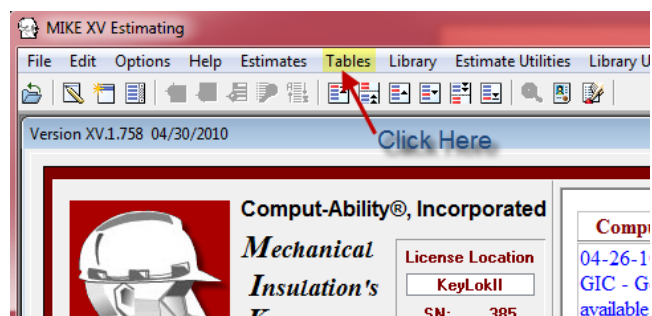
In the past, a work around process was created that let you create a LF pipe price table from a SF wrap price. The problems with this process were that if the wrap price changed the batch utility to create had to be rerun and the insulation printed in the Bill of Material reports as LF not SF.

A couple of examples of the old process are Material Codes **ASP Amaflex Sheet on Pipe** and **DWP Duct Wrap on Pipe**. The **ASP** Material Code was then linked to the Pipe Productivity Code **FLX Flex Tubing**. The **DWP** Material Code was linked to the Pipe Productivity Code **DWP Duct Wrap on Pipe**.

These two **Pipe Productivity Tables** now need to be copied the respective **Wrap Productivity Tables**.

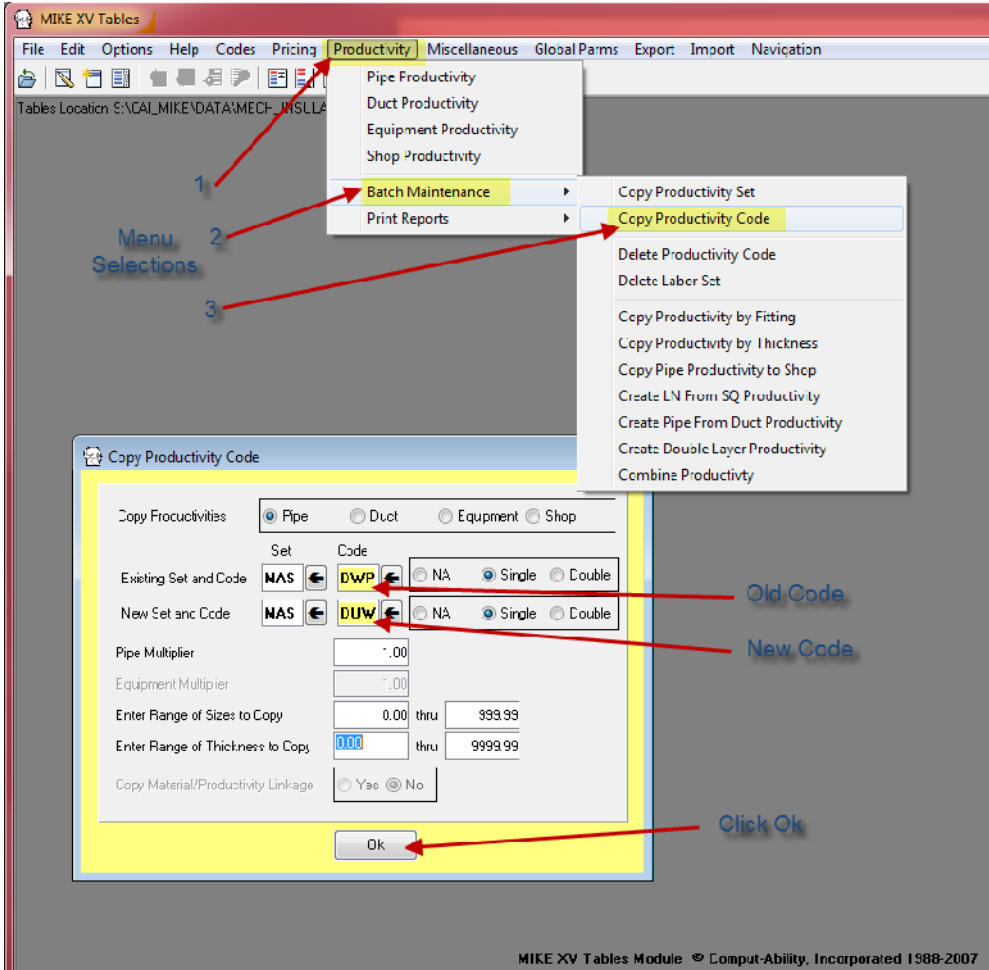
The following steps will guide you through this process.

**Step 1:** Open the **MIKE™ XV Tables** Module by clicking on the **Tables** dropdown menu.

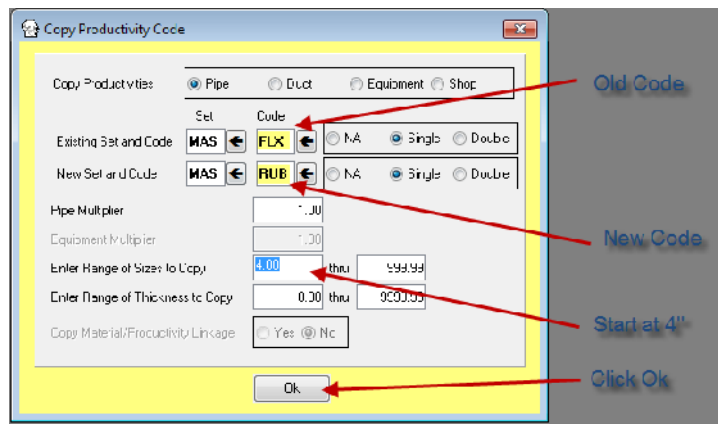


**Step 2:** In MIKE™ XV Tables Click on the **Productivity** dropdown menu. Select **Batch maintenance** and then select **Copy Productivity Code**.

**Step 3:** Select **DWP** for the Existing Productivity Code and **DUW** for the New Productivity Code. Then click on the **Ok** button.



**Step 4:** Run the program again this time select **FLX** for the Existing Productivity Code and **RUB** for the New Productivity Code. You should only copy from 4" pipe size and above. Enter a **4** in the beginning range of sizes. Then click on the **Ok** button.



Now when you Zoom in the **Pipe Spec Screen** to select a **Material Code**, both **I** and **W** **Material Types** are listed.

The **Select Codes with Linkage** dialog box displays the following data:

Material Code	Type	Description	Discount	Vendor Code	Labor Set	Prod Code
RIS1	W	INSUL-SHEET S2S	0.00	KFX	MAS	RUB
RSA1	W	INSUL-SHEET Adhesive Back	0.00	KFX	MAS	RUB
RTCF	W	THERMACEL Sheet	0.00	NOM	MAS	RUB
RUB	I	INSUL-TUBE	0.00	KFX	MAS	FLX
RUS	W	AP Armaflex Sheet	-25.00	ARM	MAS	RUB
RUT	I	THERMACEL	0.00	NOM	MAS	FLX
RUTS	I	THERMACEL Seam Seal	0.00	NOM	MAS	FLX
RUW	I	INSUL-TUBE White	0.00	KFX	MAS	FLX
RX12	I	Roxul Techton 1200 WM PC	0.00	ROX	MAS	MIN

Buttons at the bottom of the dialog: Select, Cancel, View Prices, View Productivity.

The **Insulation Pricing** screen displays the following data:

Material Code	Description	Vendor Code	Thickness	CU Price
RUS	AP Armaflex Sheet	ARM	0.75	25.71
RUS	AP Armaflex Sheet	ARM	2.00	12.588
RUS	AP Armaflex Sheet	ARM	1.50	10.280

The **Pipe Labor Productivities** screen displays a table with columns for Labor Rate, Pipe Size, Insulation Type, and various productivity metrics.

Two new *buttons* have also been added to the **Material Code Selection Screen**, you can now view the **Pricing Table** and **Productivity Table**.

1 Estimate	2 Systems	3 Specifications	4 Linkage	5 Takeoff	6 Recalculate	7 Recap	8 Reports
------------	-----------	------------------	-----------	-----------	---------------	---------	-----------

System Code	System Description - Pipe	Type	Type Description	Spec Code	Thickness	Starting Size	Ending Size	I/M Size	I/M Thick	Pipe Labor Modifier	Labor Only	Temperature Table
DUM	Domestic Water	A	ALL	FLX	Yes	0.00	4.00	I	I	UJU		
DOM	Domestic Water	A	ALL	FSX	Yes	4.10	9999.99	I	I	0.00		

The example above shows how you can set up the **System Spec Linkage** to put Armaflex Pipe Insulation on pipe up to 4” and Amaflex Sheet on Pipe above 4”.

222 - Test Wrap on Pipe - Pipe Take-off

Zoom Ditto Sort on System-Size Titles TakeOff Setup Notes Drops/Risers Line Copy Quick Copy Assembly Copy VTO

#	Drawing	Line	System Code	Type	Pipe Size	Thick	S D	Pipe	90s	45s	Tees	UCs	WVs	BVs	FPs	FVs	Strs
1			DOM	A	1.00			100.00									
2			DOM	A	6.00			100.00									2
3			DOM	A	8.00			100.00									2

During the (Re)Calculation process the program auto creates a Pipe LN Price Table from the Wrap Price Table.

The **Bill of Material Report** now shows the **SF** Quantity of **Wrap on Pipe**. It also shows the **LF** of **Pipe** in the **Pieces** column and the **Stretch Out** in **LF**.

05/03/10 14:41:39 ---Your Company Name Here--- Mechanical Insulation's Key Estimator Bill of Materials

Estimate: 000222 Test Wrap on Pipe

Page: 1 Report Version: 1c

Description	Material Code	Size	Thickness	SO - Table IOD Fit #	Pieces	SF of Wrap	Quantity
AP Armaflex Sheet ARM	RUS	S *	11" x 1"	3.40	6		20 * SF
	RUS	S *	14" x 1"	4.19	6		25 * SF
* Oversize Pipe Covering for BVs FPs FVs & Strainers							
AP Armaflex Pipe Insul. ARM	ARM	S	1" x 1"				102 LF
AP Armaflex Sheet ARM	RUS	S	6" x 1"	2.26	102		231 SF
	RUS	S	8" x 1"	2.78	102		284 SF
ARM 520 ADH PT							3 PT

Stretch Out LF of Pipe Takeoff

© 2010 Comput-Ability, Incorporated All rights reserved.

MIKE™ and Visual TakeOff+™ are trademarks of Comput-Ability, Incorporated.

Comput-Ability® is a registered trademark of Comput-Ability, Incorporated.