

Comput-Ability® Estimate Systems Mechanical Insulation's Key Estimator™ - Version XV

MIKE™ XV Guide to Installing the Microsoft.NET Jsharp update.

If you are running Windows 7 or Vista and unable to Browse to import an estimate or Zip up an exported estimate you will need to install one of the two updates.

These updates are available from our web site here:

<http://www.comput-ability.net/miscellaneous.htm>

[Microsoft .NET Jsharp \(x86\)](#)
[Microsoft .NET Jsharp \(x64\)](#)

Click on one of the two links below and run the install routines.

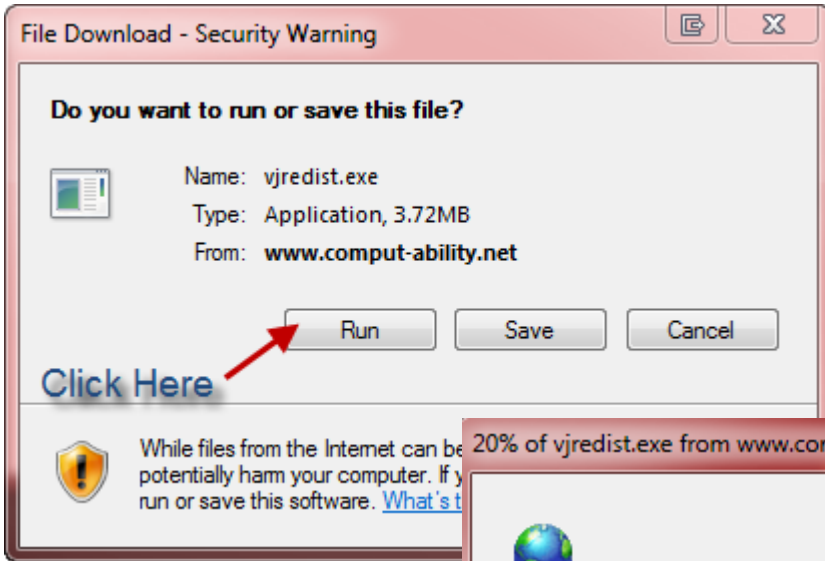
Run this install if you are running 32 bit Windows 7, Vista or XP [Microsoft .NET Jsharp \(x86\)](#)

Run this install if you are running 64 bit Windows 7 or Vista [Microsoft .NET Jsharp \(x64\)](#)

To figure out what type of Windows 7 or Vista you are running you need to:

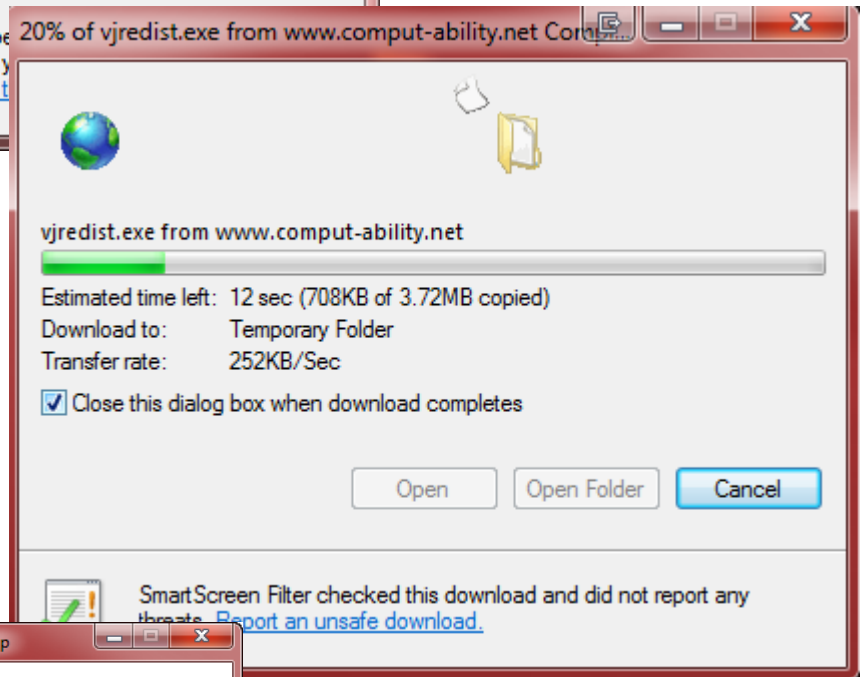


After *clicking* on the needed update links above the following screens will display.

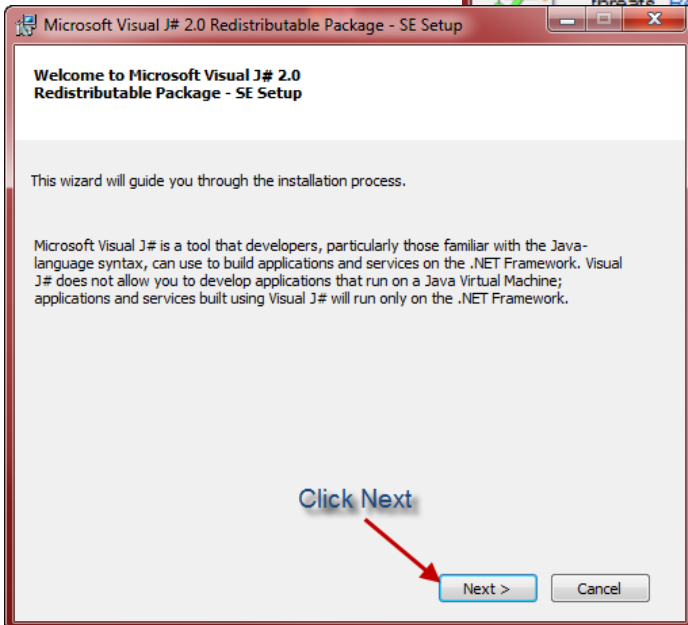


Click on **Run** button

You will probably get a Windows Security warning at the point in the installation, accept to continue.

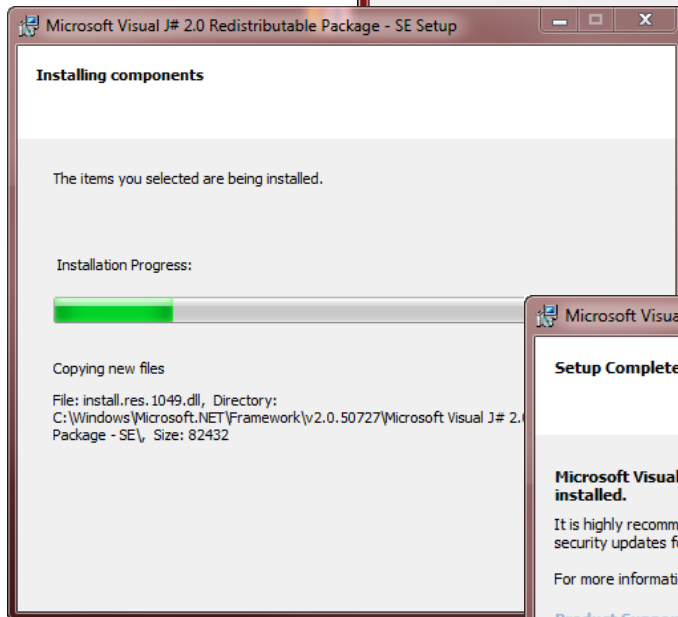
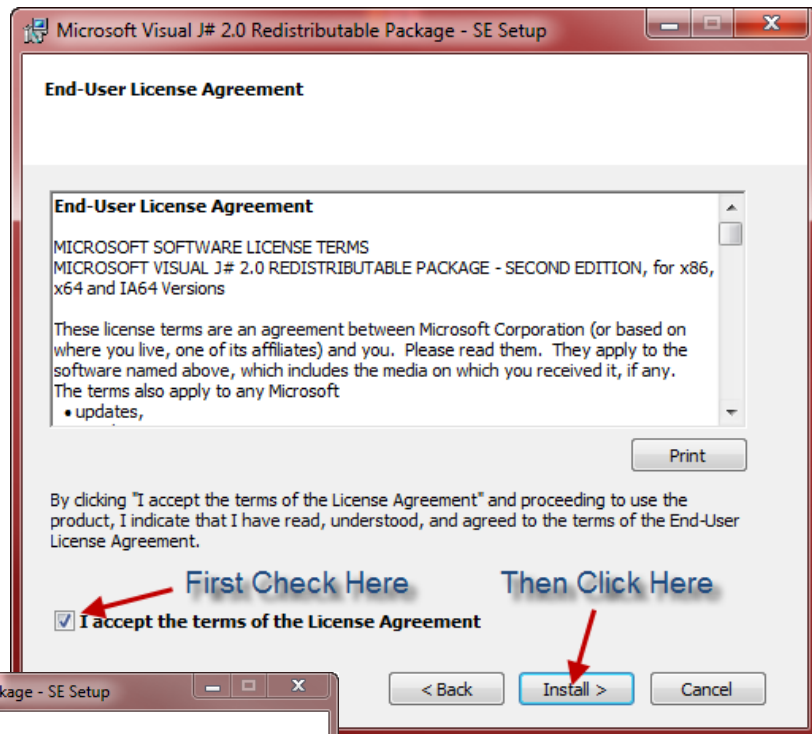


Wait for file to download.

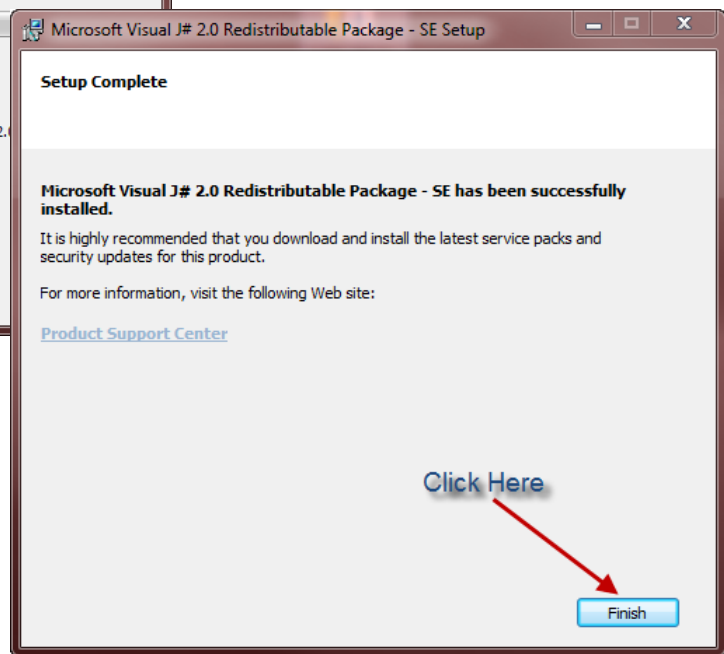


Click on **Next** button

Click on *Check Box* then
Click on **Install** button



Wait for the Installation to
complete.



Click on **Finish** button